

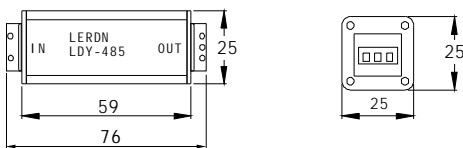
LERDN™

485 signal surge protection device

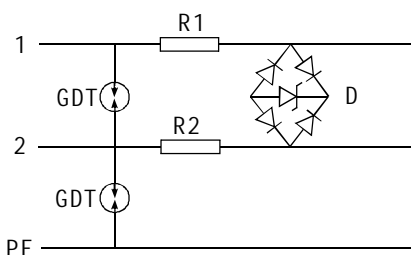
LDY-485/L NO. 085102



Appearance and installation dimension



Schematic circuit diagram



Application range

LDY-485/L signal lightning protection devices are applicable to the lightning protection of control signal and twisted data pair, which can prevent various dialing equipments from permanent damage or transient interruption arising from inductive overvoltage, overcurrent and the other transient surge voltage caused by lightning or industrial noise, etc.

Main features

- ☆ Aluminum profile shell, attractive and durable, good shielding effect.
- ☆ Wiring terminal earthing, convenient to use, reliable connection.
- ☆ Introducing multilayer protection circuit, selecting the latest high-speed surge protection device of quick response, low output residual voltage and super transmission performance.

Main technical data

Technical parameter	Type	LDY-485/L
Working voltage U_n V		12
Max. continuous Voltage U_c V		18
Normal discharge current I_n (8/20 μ s)		5kA
Clamping voltage U_p		$\leq 80V$
Response time T_a ns	line to line	≤ 1
	line to earth	≤ 100
Transmission rate V_s		2M
Insertion loss A_e dB		≤ 0.3
Enclosure material		aluminum profile
Interface form		wiring terminal
Working temperature		-40°C - 70°C

Installation instruction

1. The protector connected in serial between the signal channel and the protected device.
2. Connect the input terminal to the signal channel, and the output terminal to the protected device, reverse connection prohibited.
3. Connect the earthing wire of the protector to the equalizing ring of the lightning protection system
4. Invalid system: the earthing short circuit or open circuit