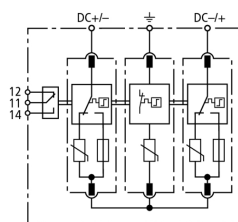


## DG M YPV SCI 1000 FM (952 515)

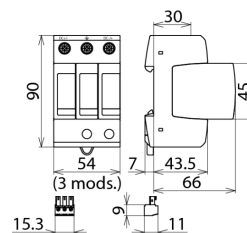
- Prewired modular complete unit for use in photovoltaic systems consisting of a base part and plug-in protection modules
- Combined disconnection and short-circuiting device with safe electrical isolation in the protection module prevents fire damage caused by d.c. switching arcs (patented SCI principle)
- Safe replacement of protection modules without arc formation due to integrated d.c. fuses



Figure without obligation



Basic circuit diagram DG M YPV SCI 1000 FM



Dimension drawing DG M YPV SCI 1000 FM

Modular multipole surge arrester with three-step d.c. switching device for use in PV systems with remote signalling contact (floating changeover contact)

Type	DG M YPV SCI 1000 FM
Part No.	952 515
Conformity with prEN 50539-11	yes
SPD classification according to EN 61643-11	Type 2
SPD classification according to IEC 61643-1/-11	Class II
Max. PV voltage ( $U_{CPV}$ )	$\leq 1000$ V
Short-circuit withstand capacity ( $I_{SCWPV}$ )	1000 A
Total discharge current (8/20 $\mu$ s) ( $I_{total}$ )	40 kA
Nominal discharge current (8/20 $\mu$ s) [(DC+/DC-) --> PE] ( $I_n$ )	12.5 kA
Max. discharge current (8/20 $\mu$ s) [(DC+/DC-) --> PE] ( $I_{max}$ )	25 kA
Voltage protection level ( $U_P$ )	$\leq 4$ kV
Voltage protection level at 5 kA ( $U_P$ )	$\leq 3.5$ kV
Response time ( $t_A$ )	$\leq 25$ ns
Operating temperature range ( $T_U$ )	-40°C...+80°C
Operating state/fault indication	green / red
Number of ports	1
Cross-sectional area (min.)	1.5 mm <sup>2</sup> solid/flexible
Cross-sectional area (max.)	35 mm <sup>2</sup> stranded/25 mm <sup>2</sup> flexible
For mounting on	35 mm DIN rails acc. to EN 60715
Enclosure material	thermoplastic, red, UL 94 V-0
Place of installation	indoor installation
Degree of protection	IP 20
Capacity	3 module(s), DIN 43880
Approvals	UL, CSA
Type of remote signalling contact	changeover contact
a.c. switching capacity	250 V/0.5 A
d.c. switching capacity	250 V/0.1 A; 125 V/0.2 A; 75 V/0.5 A
Cross-sectional area for remote signalling terminals	max. 1.5 mm <sup>2</sup> solid/flexible
Weight	323 g
Customs tariff number	85363030
GTIN	4013364126435
PU	1 pc(s)

We reserve the right to introduce changes in performance, configuration and technology, dimensions, weights and materials in the course of technical progress. The figures are shown without obligation.